

DID YOU KNOW?

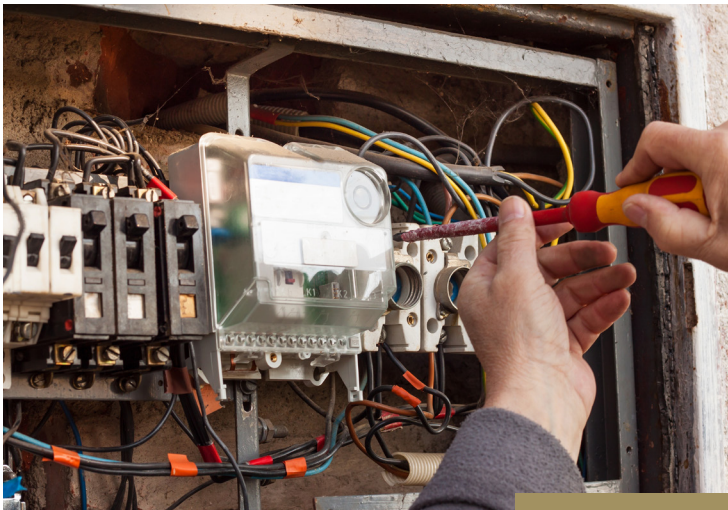
about our... **ELECTRICAL PANEL SCREW**



ELECTRICAL PANEL SCREW – LARGE WAFER / PILOT POINT ZINC PLATED / PHILLIPS DRIVE / HEC

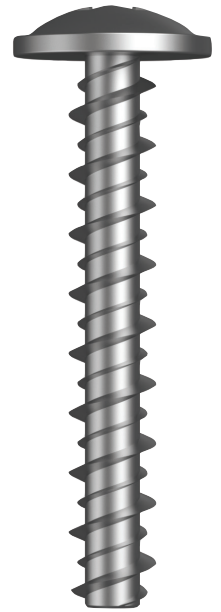


Part	Gauge	TPI	Length (mm)	Pack Qty
T9PPZAP300913	M3	9	13	200
T9PPZAP300920	M3	9	20	200
T9PPZAP300925	M3	9	25	200
T9PPZAP300932	M3	9	32	200



» Application:

Do not replace a sharp-pointed screw in a panel cover if wires are crowded close to the screw opening. This is an unsafe practice and should always seek the help of a professional. The best way to fix is to use a blunt tipped screw.



Blunt Tip
Safer Installation

Electrical Panel - Safety First

Sharp sheet metal screws: If you find that a sharp-tipped sheet metal screw has been used (usually to replace a lost original fastener) be careful and watch out for pierced, damaged, short-circuited wires in the panel - both during removal and during panel cover replacement.

Important!

Before re-installing the cover of the electrical panel, check to assure that no electrical wires have moved close to the panel cover screw mounting holes, where they might be pierced or damaged.

It is important to use basic safety procedures, clothing, and equipment for home inspectors and electrical inspectors.

1807161DYK