

# DID YOU KNOW?

about our...

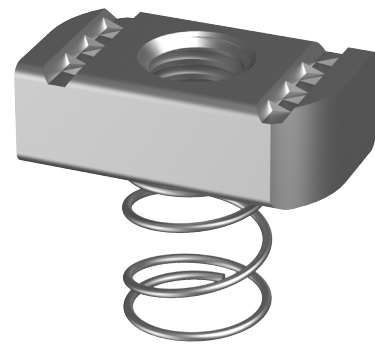


**NEW  
PRODUCT**

## Strut Channel Nut Short Spring

### STRUT CHANNEL NUT SHORT SPRING ZINC PLATED (ROHS COMPLIANT) / HEC

Part	Diameter	A	B	C	L	d2
		(mm)	(mm)	(mm)	(mm)	(mm)
NSMSZSSCM06	M6	19	34.5	6.0	19	18
NSMSZSSCM08	M8	19	34.5	8.0	19	18
NSMSZSSCM10	M10	19	34.5	9.2	19	18
NSMSZSSCM12	M12	19	34.5	12.0	19	18
NSMSZSSCM16	M16	29	34.5	11.0	19	18

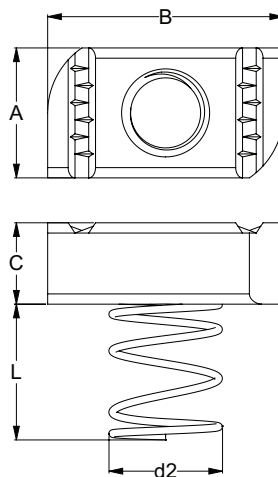


#### FEATURES

- Easy install and precise placement
- Spring holds the nut securely in place, acting as a 'third hand'
- Freedom to adjust positioning
- Serrated grooves on the top face prevent unwanted movement or rotation

#### APPLICATIONS

- Securing cable trays and ladders onto channel (strut)
- Using an angle fitting to make a right-angle connection between two lengths of channel
- Fixing of channel supports to strut
- Shallow channel sections (41x21mm channel)



Disclaimer: while every reasonable effort has been made to ensure that this document is correct at the time of printing, Hobson Engineering®, its agencies and employees disclaim all liability in respect to anything or the consequences of anything done or omitted regarding the whole or any part of this document.

Bolt Tension | Anti-Vibration | Product Reliability | Traceability

[hobson.com.au](http://hobson.com.au) **QUALITY FASTENERS SINCE 1935**

