

DID YOU KNOW?

about our...



**NEW
PRODUCT**

Rivet Nut Flat Round Knurl Open

RIVET NUT FLAT ROUND KNURL OPEN ALUMINIUM / HEC

Part	Size	Length L (mm)	Grip Range		Hole Diameter D (mm)	Body Diameter B (mm)	Head Diameter A (mm)	Head Thickness T (mm)	Protrusion P (mm)
			G (mm)	Max					
			Min	Max					
NRALPFKOM04110	M4	11.0	0.5	2.0	6	5.9	9	1.0	6.0
NRALPFKOM05130	M5	13.0	0.5	2.5	7	6.9	10	1.0	7.5
NRALPFKOM06160	M6	16.0	0.5	3.0	9	8.9	12	1.5	9.2
NRALPFKOM08175	M8	17.5	0.5	3.0	11	10.9	15	1.5	10.2
NRALPFKOM10190	M10	19.0	0.5	3.0	13	12.9	16	2.0	11.5

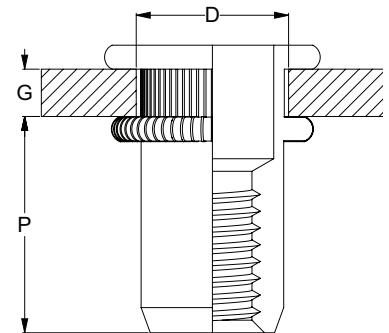
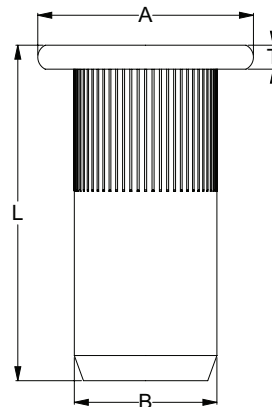


APPLICATIONS

- Used as a one-piece blind fastener
- Metal fabrication
- Can be used with softer materials such as aluminium and plastic
- Used when the base material is too thin, cannot be tapped, or the back side is inaccessible to install a regular nut

FEATURES

- Knurled/splined to prevent rotation during installation and tightening
- Chamfered end to aid installation into the hole



Disclaimer: while every reasonable effort has been made to ensure that this document is correct at the time of printing, Hobson Engineering®, its agencies and employees disclaim all liability in respect to anything or the consequences of anything done or omitted regarding the whole or any part of this document.

Bolt Tension | Anti-Vibration | Product Reliability | Traceability

hobson.com.au **QUALITY FASTENERS SINCE 1935**



230616DYK